



# Leaside Traffic Calming Plan Update

Community Meeting 2  
November 22, 2016  
7:00 PM

# Welcome and Study Background

- ▶ Welcome and Thank You!
- ▶ Study background from LPOA's perspective:
  - Why are we doing this study?
  - Who has initiated the study?
  - Who is completing the study?
- ▶ Presentation slides on LPOA website
- ▶ Further consultation in new year

# Meeting Agenda

- ▶ Study Objectives, Process and Considerations
- ▶ Review of Community Meeting #1
- ▶ Shortlist of Potential Measures
- ▶ Traffic Calming Plan Elements
- ▶ Next Steps

# Study Objectives

- ▶ Develop traffic calming plan for entire Leaside community to:
  - Reduce through traffic
  - Enhance environment for neighbourhood trips
  - Protect all residential streets and avoid transferring through traffic to adjacent streets
  - Protect and give priority to public transit
  - Promote, encourage and facilitate active transportation

# Study Process



# Study Considerations

- ▶ Ongoing traffic management initiatives for north and south Leaside:
  - Committees working with Councillor Burnside to identify near term solutions
- ▶ Focus on longer term view after corridor redevelopment and Eglinton Crosstown LRT:
  - 2031 Horizon Year

# Study Considerations

- ▶ Recent announcements:
  - Automated Speed Enforcement (Photo Radar) in Community Safety Zones and school zones
  - Legislation will also introduce additional reduced speed limit zones and permit more red-light cameras

# Community Meeting #1

- ▶ History of Leaside's Traffic Problems
- ▶ Study Objectives and Considerations
- ▶ Planning Context
- ▶ Traffic Calming Overview
- ▶ Participant Input



# Workshop Summary

- ▶ Traffic volumes and speeding issues on several streets
- ▶ Drivers, cyclists and pedestrians violating regulations
- ▶ Proliferation of signs fosters disregard
- ▶ Non-auto modes (transit, cycling, walking) prioritized

# Shortlist of Potential Measures

- \* Public Education
- \* Police Enforcement
- \* Electronic Enforcement
- \* Radar Speed Trailer
- \* Signs (Traffic Calmed, Community Safety Zone)
- \* Speed Limit Reductions
- \* Sidewalk Extension
- \* Raised/Textured Crosswalk
- \* Speed Cushions and Humps
- \* Curb Radius Reduction
- \* On-street Parking
- \* Turn Controls (Signed and Physical)

# Traffic Calming Plan Elements

- ▶ Variety of measures and strategies aimed at:
  - Raising awareness and educating users
  - Reducing speeds
  - Discouraging through traffic (where appropriate)
  - Minimizing conflicts between users
  - Improving neighbourhood environment
- ▶ Implemented area-wide over time

# Education Campaign

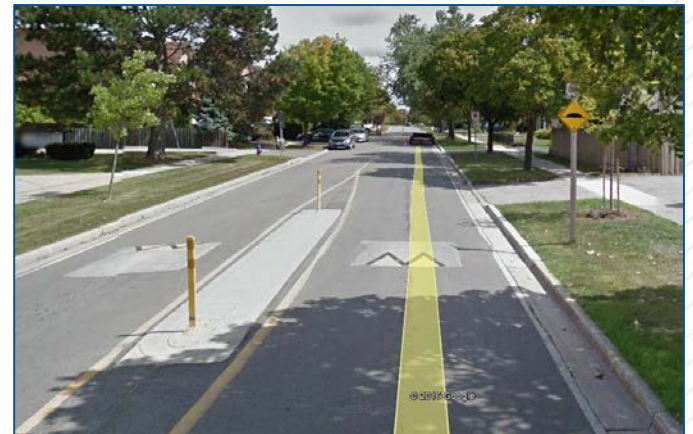
- ▶ Introduce public awareness campaign for schools, residents and businesses:
  - Safety risks associated with speeding
  - Proper intersection crossing for pedestrians
  - “Rules of the Road” for cyclists
- ▶ Use radar speed trailers

# Gateway Features

- ▶ Install at key entries to Leaside from Eglinton Avenue and Bayview Avenue:
  - Curb Radius Reduction
  - Raised Crosswalks/Intersections
  - Signing
- ▶ Benefits:
  - Alert drivers to changing conditions

# Speed Cushions

- ▶ Implement on residential through roads:
  - Hanna Road
  - Sutherland Drive
  - Glenvale Boulevard
  - Parkhurst Boulevard
- ▶ Benefits:
  - Reduces vehicle speeds

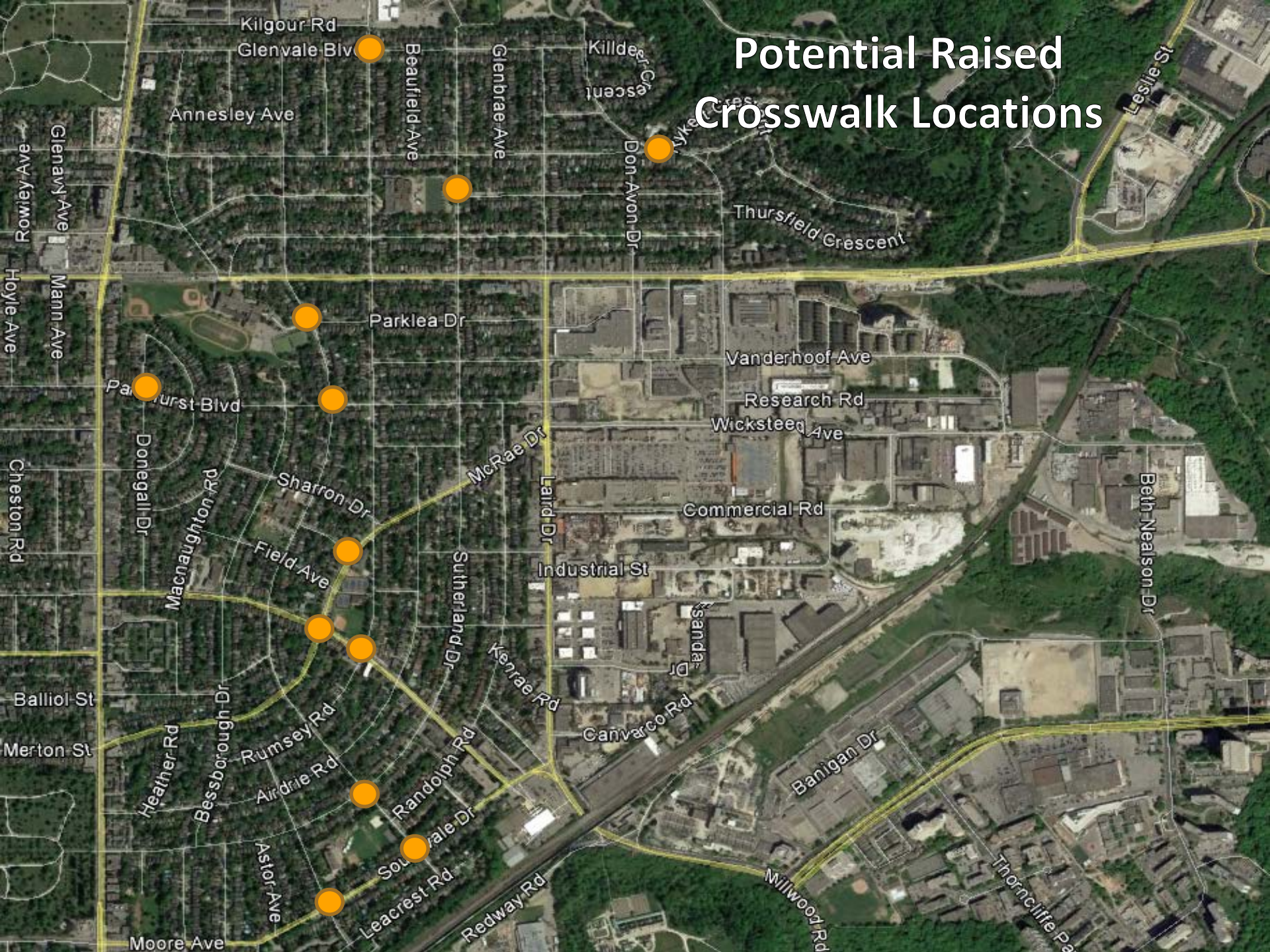


# Raised Crosswalks

- ▶ Raise crosswalk to height of sidewalk and narrow road with curb extensions at locations with higher pedestrian activity
- ▶ Benefits:
  - Slows vehicles
  - Shortens pedestrian crossing distance



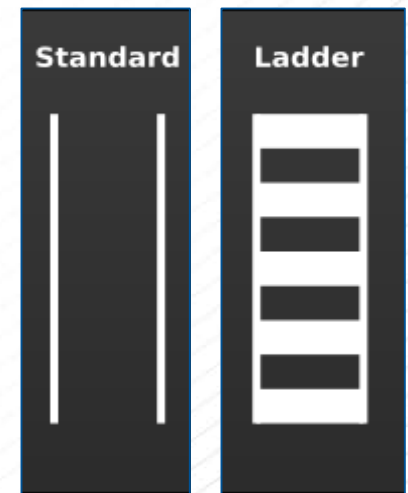
# Potential Raised Crosswalk Locations





# Crosswalk Markings

- ▶ Install/refresh ladder crosswalk markings at:
  - All signalized intersections
  - Stop-controlled intersections with higher pedestrian activity
- ▶ Benefits:
  - Alerts drivers to presence of pedestrians
  - Lowers vehicle speeds



# Potential Crosswalk Marking Locations



# Red Light Cameras

- ▶ Install at select signalized intersections:
  - McRae Drive/Wicksteed Avenue and Laird Drive
  - Millwood Road and McRae Drive
- ▶ Benefits:
  - Discourages drivers from speeding and running red lights



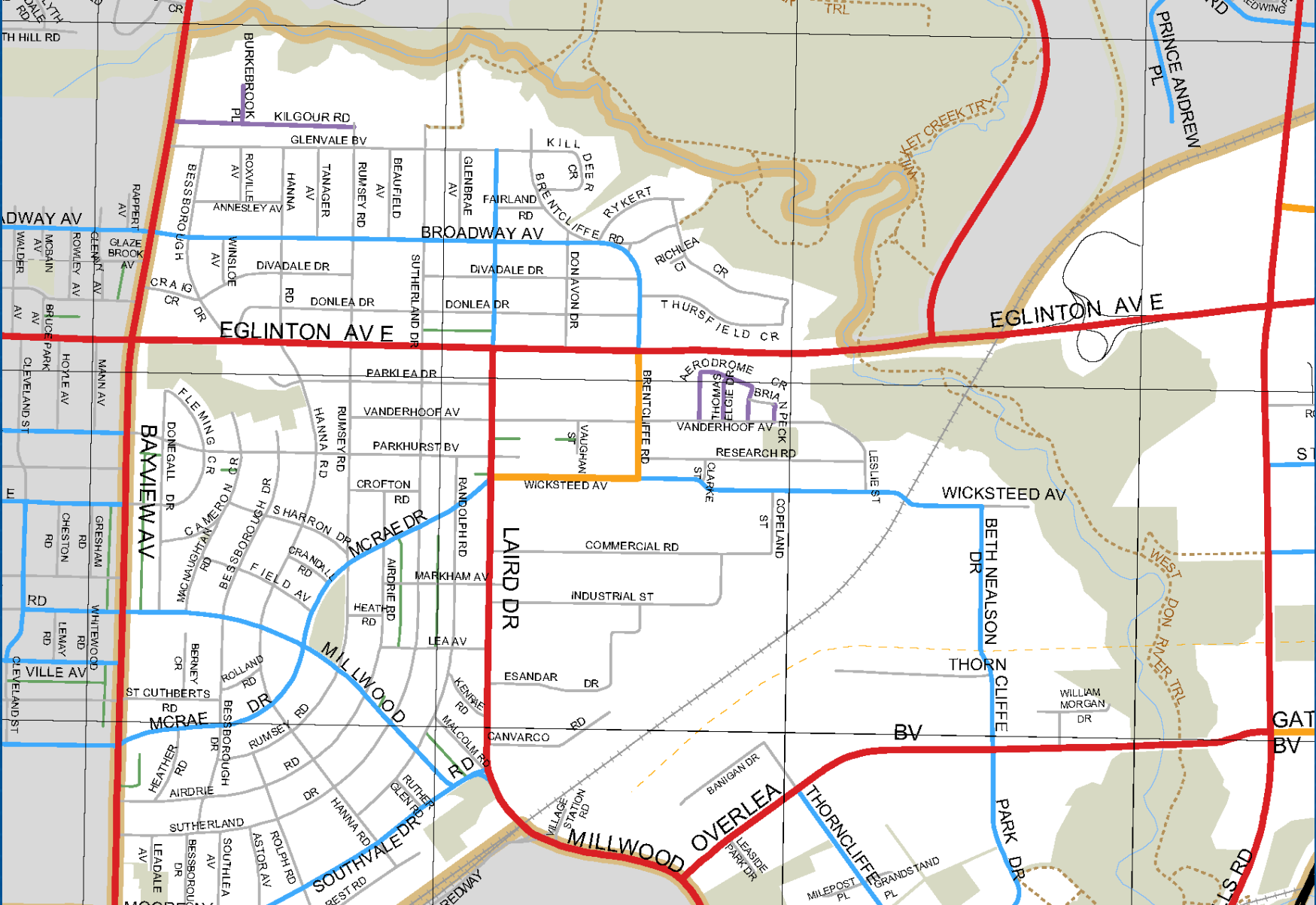
# Photo Radar (if enacted)

- ▶ Implement in all Community Safety Zones and school zones in Leaside
- ▶ Create zones at parks, community centres and libraries:
  - Howard Talbot Park
  - Trace Manes Park
  - Toronto Public Library, etc.

# Speed Limit Reduction

- ▶ Reduce speed limit to 30 km/h on all roads near schools and parks
- ▶ Implement 40 km/h speed limits on all local roads
- ▶ Consider 40 km/h speed limits on collector roads





**Toronto Transportation Services**  
**Road Classification System**  
 Adopted by City Council November 27, 28 and 29, 2012

Operational Planning and Policy Unit  
 Transportation Infrastructure Management Section  
 Transportation Services Division

Road Classification System		Physical Features
Provincial Expressway	Other	River
Toronto Expressway	Laneway	Railway
Major Arterial	Pending	Shoreline
Minor Arterial	Park Roads	Trail
Collector	Reserved Bus Lane	Hydro Line
Local	City Boundary	Walkways
Ward Boundary	Parks & Recreation Area	

Don Valley West (26)

# Bicycle Lanes

- ▶ Install bicycle lanes per City Cycling Network Ten Year Plan:
  - Moore Avenue/Southvale Drive
  - Wicksteed Avenue
  - Brentcliffe Road
- ▶ Benefits:
  - Reduces vehicles speeds
  - Provides safer facility for cyclists



# Next Steps

- ▶ Review meeting input
- ▶ Conduct area consultation sessions
- ▶ Finalize traffic calming plan
- ▶ Develop implementation strategy
- ▶ Present to City of Toronto

CHECK THE LPOA WEBSITE ([www.lpoa.ca](http://www.lpoa.ca))  
FOR STUDY UPDATES



# Thank You!!

- ▶ Please subscribe to the LPOA mailing list to receive updates at:  
<http://lpoa.ca/join-our-mailing-list-for-lpoa-news/>
- ▶ Please use our comment form to submit your comments by **January 31, 2017** at:  
<http://lpoa.ca/leaside-traffic-calming-plan-comment-form/>

# Thank You!!

- ▶ If you prefer to submit comments by mail, please send by **January 31, 2017** to:

Ms. Carol Burtin Fripp

Co-President

Leaside Property Owners' Association (LPOA)

1601 Bayview Avenue

PO Box 43582

Toronto, ON M4G 3B0